



# CHRONIC CARE MANAGEMENT

Managing your health can be challenging. The Chronic Care Management program can help you live a healthier life and keep you doing the things you love. As a participant you can expect:

- Personalized care from a dedicated chronic care manager
- Assistance coordinating your visits with providers, labs, radiology, or others
- Help booking appointments with your provider for urgent matters
- Oversight of medications
- A personalized plan of care that aligns with your goals and values

## ELIGIBILITY

If you have Medicare and two or more chronic health conditions, some examples of which are listed below, you may benefit from the Chronic Care Management program.

- Alzheimer's
- Arthritis
- Atrial fibrillation
- Autism spectrum disorders
- Cancer
- Cardiovascular disease
- COPD
- Depression
- Diabetes
- Hypertension or high blood pressure

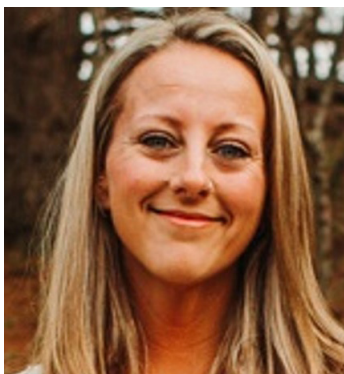
## WHAT IS THE COST?

As with other Medicare services, you will be responsible for a 20% coinsurance payment monthly, unless you have a supplemental plan that covers this amount. If you have a commercial plan, check with your plan to determine what will be covered and any cost you will be responsible for.

## HOW DO I JOIN?

Ask your primary care provider to find out if you qualify for this service. The office will complete participant registration.

# OUR CHRONIC CARE MANAGEMENT TEAM



**Amie Boehmer, BSN, RN**  
tel: (517) 975-2041  
amie.boehmer@mclaren.org



**Adrianna Davis, RN**  
tel: (248) 484-4948  
adrianna.davis1@mclaren.org



**Cheryl Davison, LPN**  
tel: (517) 913-1147  
cheryl.davison@mclaren.org



**Lori Gute, BSN, RN**  
tel: (517) 975-2046  
lorilee.gute1@mclaren.org



**Margaret Hamilton, BSN, RN**  
tel: (248) 484-4995  
margaret.hamilton@mclaren.org



**Dawn Harlick, RN**  
tel: (517) 975-2045  
dawn.harlick@mclaren.org



**Kayla Harmon, BSN, RN**  
tel: (517) 975-2044  
kayla.harmon1@mclaren.org



**Sherrie Lathrop, BSN, RN**  
tel: (989) 894-3851  
sherrie.lathrop@mclaren.org



**Ginina Magnone, RN**  
tel: (248) 484-4917  
ginina.magnone@mclaren.org



**Theresa Spenny, LPN**  
tel: (517) 913-1145  
theresa.spenny@mclaren.org